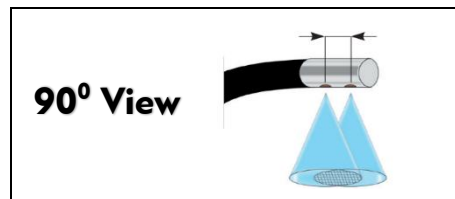
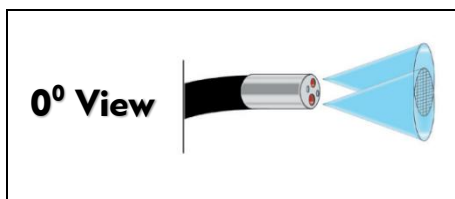




iX3D

3D Measurement Videoscope System



Efficient Borescope with Stereo Vision

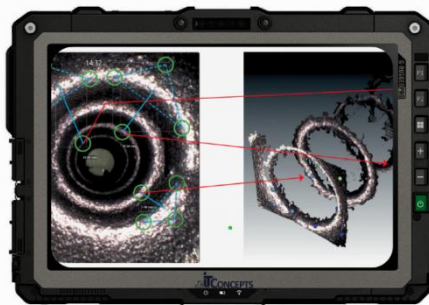
iX3D is a precise and modular working video endoscope system for the execution of 2D and 3D surface inspection and measurement functionality in hard-to-reach areas.

The system offers 2 light weighted probes (0° forward view + 90° side view), each equipped with a stereo vision camera system generating 3D data. The simple and user-friendly **interface and measurement software is intuitive**.

The monitor unit can be positioned independently of the probe. The probes have a very low weight. Both allow **almost unlimited use in any environment**.

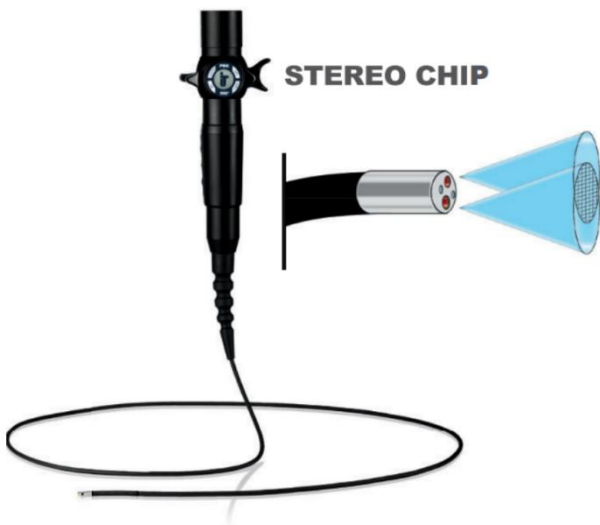


0°

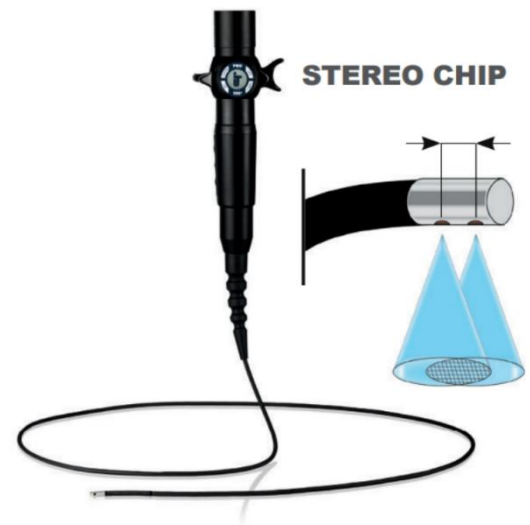


90°

Probe 1



Probe 2



Measurement Features:-

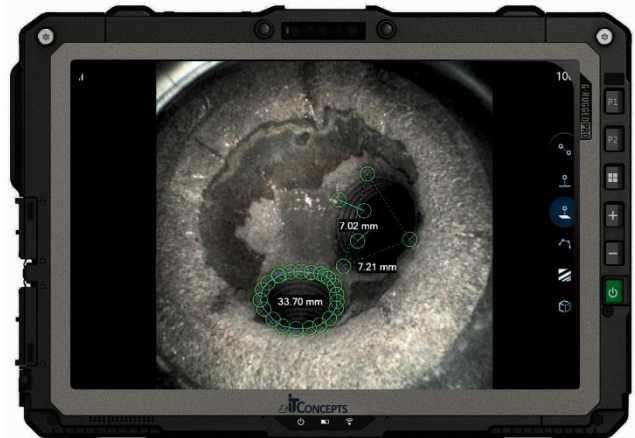
- a. Point to Point
- b. Point to Line
- c. Point to Plane (Depth)
- d. Multipoint
- e. Multipoint Area
- f. Profile
- g. Dent

Flexible monitor unit:-

Robust rugged tablet PC for industrial use with an ultra-bright durable display.

10.1-inch touch screen for optimal visual inspection, can be operated with gloves

Good performance in direct sunlight due to the bright display.



Software Features:-

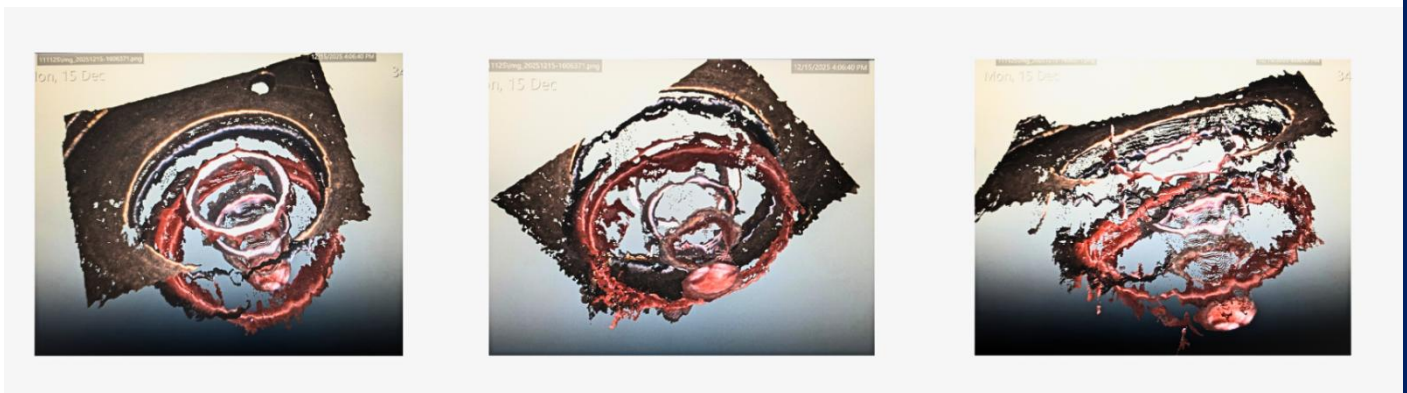
Modern and intuitive user interface in the style of a smartphone app.

Enhance and filter camera images (Brightness control adjustment (0 to 100), Brightness level balancing, Sharpness control adjustment, invert colors, Automatic white balance (AWB), AEC (Automatic as well as adjustable).

Simple and extensive file management including quickly accessible display of the last recordings.

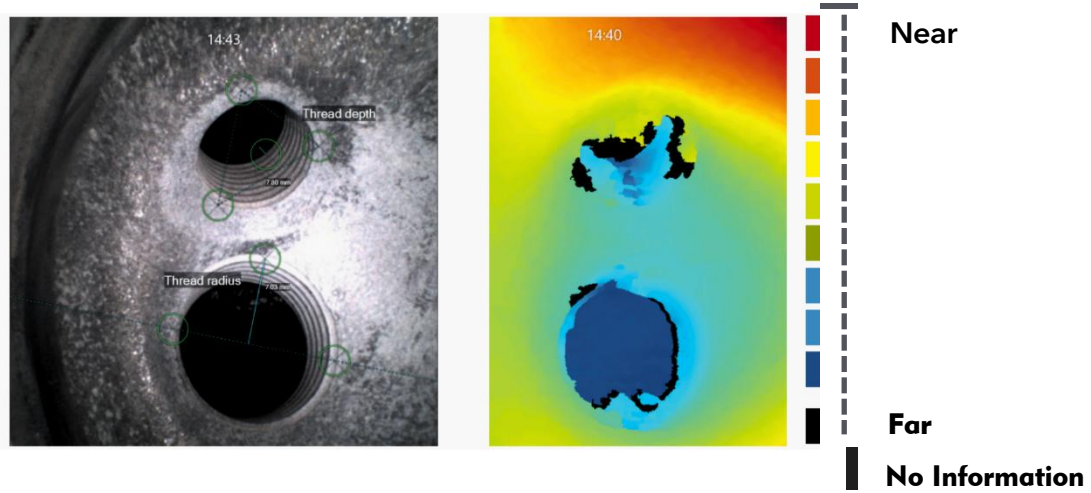


Measurement 3D view

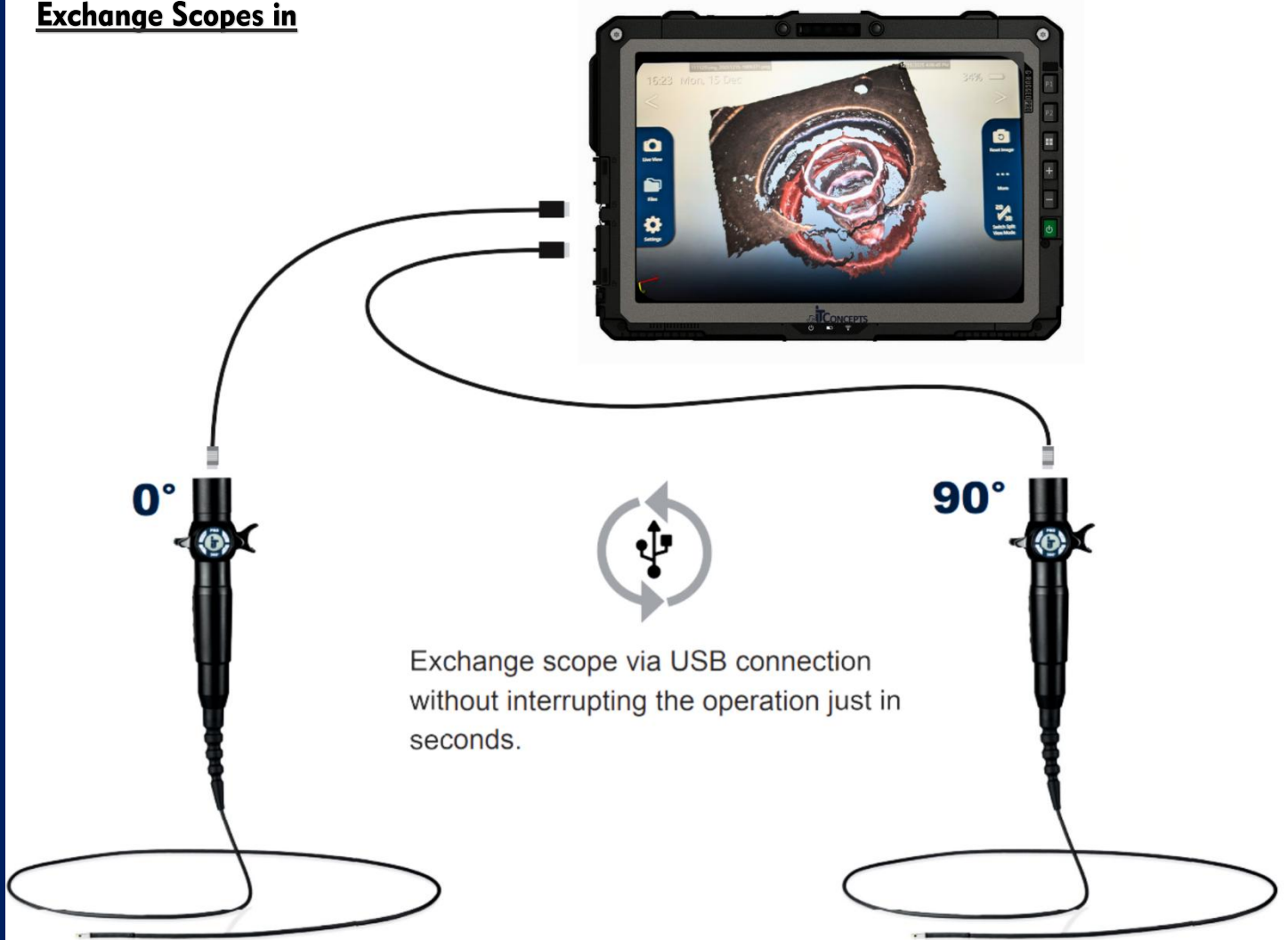


360° 3D view of image and measurement points / Depth map display / zoom in/out for details.

Colored representation of the depth distances in the inspection area



Exchange Scopes in



Probe Technical Specification:-

Probes:	6.0mm		4.0mm	
Working length:	1.5 – 5.0mtr		1.5 – 4.0mtr	
Direction of view:	0°	90°	0°	90°
Field of View:	90°/ 120°	90°/ 120°	90°/ 120°	90°/ 120°
Depth of Focus:	4mm - ∞ 2mm - ∞		4mm - ∞ 2mm - ∞	
Articulation:	4-way (360°)		4-way (360°)	
Outer Braid:	Multi-Layer Tungsten on PU Jacket			
Illumination Type:	Ultra High-power White Light Source (min. life 50,000 hrs.)			
Illumination control:	3 steps			
Weight of control handle:	Less than 1 kg			
Tip operating temperature:	-25°C to 100°C			
System operating Temp:	-25°C to +50°C			
Storage temperature:	-25°C to +60°C			
Relative humidity:	95% less than – non-condensing			
Waterproof:	Probe and distal End up to 1 bar- 10.2m H2O			
Resistance:	Probe and distal End to oils and saline (5%)			
Sensor 0° & 90°:	HD AIT Advanced Image Sensor (1MP)			
Image resolution:	800 x 800			
Video resolution:	800 x 800			
Video Recording Ability:	30/60 fps			
Protection:	IP68			
Military standard:	MIL-STD 810G			

Monitor Technical Specification:-

Processor:	12 th Gen Intel® Core™ i5-1245U (@1.60GHz 2.11GHz with Intel® Turbo Boost Technology, HD 620, 3M cache)
Operating system:	Windows®11 Pro 64-bit
Display size:	10.1" (25.65 cm)
Resolution:	1,920 x 1,200 pixels (WUXGA)
Brightness:	1,000 cd/m ²
Screen protector:	Corning® Gorilla® Glass
Hard disk:	212 GB SSD (157 GB-Usable) Ram 16GB
Interfaces:	IEEE 802.11a/b/g/n/ac 1x USB 3.1 Type-A™, 1x HDMI, 1x LAN (1Gbs)
Protection:	IP65
Military standard:	MIL-STD 461G, MIL-STD 810G
Battery:	6-cell Li-ion battery, approx. 4,500 mAh (12-month guarantee)
Battery Life:	Approx. 3-4 Hrs
Power supply:	65 watts, external
Input:	100-240VAC /Output: 19V DC / 3.42A
Video Output:	Wired & Wireless over Wi-Fi
Weight:	Less than 1.35 kg
Zoom:	5x (in 3 steps) & zoom of captured image is also available

“We Build Your Remote Vision”

I Can See

What you can't...



Scan here to Know more 🖱️



Manufactured by: JSC IT Concepts India Pvt Ltd.

📍 B-216, 1st Floor, Okhla Industrial Area Phase-1, New Delhi-110020 📞 :+91-11- 44729518.

✉️ : info@jscitconcepts.com 🌐 : www.jscitconcepts.com